



HP WallArt Solution 3.0

JDF Workflow Integration

February 2015

HP WallArt Team



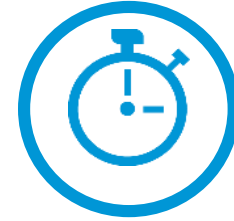
Enabling JDF in HP WallArt Basic Concept

JDF/RIP's Automation

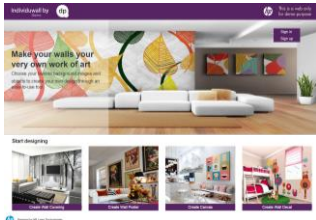
More efficiency on your workflow

How can it accelerate the process?

- 1 Sends ready-to-print files directly from your web2print
- 2 RIP automatically downloads your files, without manual interaction



AUTOMATIC PROCESS



HP WallArt Web2Print



File Ripping



Printing

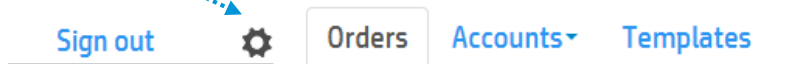


Enabling JDF in HP WallArt

How it works

Enter Workflow Integration settings

Click on **settings**

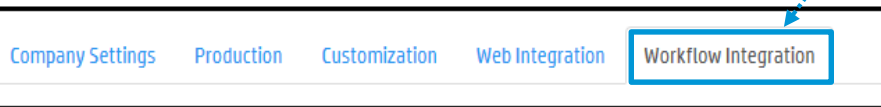


Orders

Accounts ▾

Templates

Enter **Workflow Integration** settings



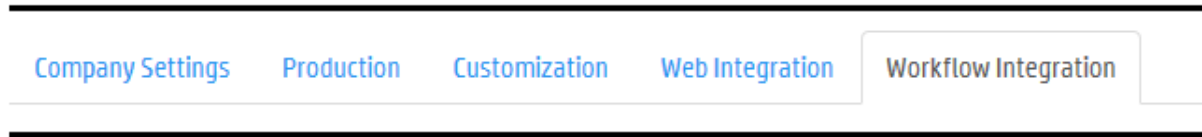
JDF Connection

<https://jdf.hpwallart.com/digitalprinting>

Enable JDF connectivity ⓘ



Configure JDF Connection settings



JDF Connection

Enter this URL in order to configure HP WallArt RIP settings

Enable JDF connectivity ⓘ

Note: URL customized for each HP WallArt's user (e.g. *digitalprinting*)
https://jdf.hpwallart.com/xxx



Configure JDF Connection settings

Company Settings

Production

Customization

Web Integration

Workflow Integration

JDF Connection

<https://jdf.hpwallart.com/digitalprinting>



Enable JDF connectivity



Enable JDF authentication



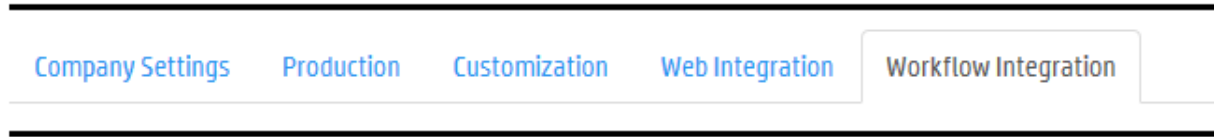
Use single page PDF in JDF job ticket



Needs to be checked in order for the JDF Automation to be activated and all the options will appear. You need to click on “Enable JDF connectivity” to be able to download [JDF ticket](#) and have the [RIP status](#), both in the dashboard



Configure JDF Connection settings



JDF Connection

<https://jdf.hpwallart.com/digitalprinting>

Enable JDF connectivity ⓘ

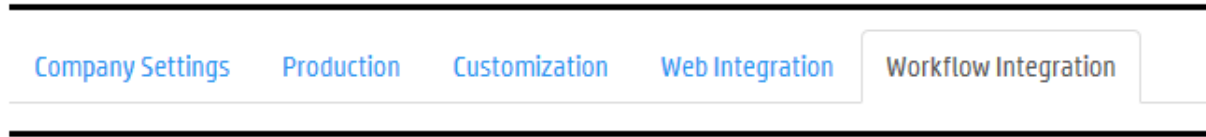
Enable JDF authentication ⓘ

..... It will appear enabled by default and you may disable it by not having it checked

Use single page PDF in JDF job ticket ⓘ



Configure JDF Connection settings



JDF Connection

Enable JDF connectivity ⓘ

Enable JDF authentication ⓘ

Use single page PDF in JDF job ticket ⓘ

←..... This option refers to have the JDF job ticket with a PDF file with no trim lines or tiling





HP WallArt Set up in



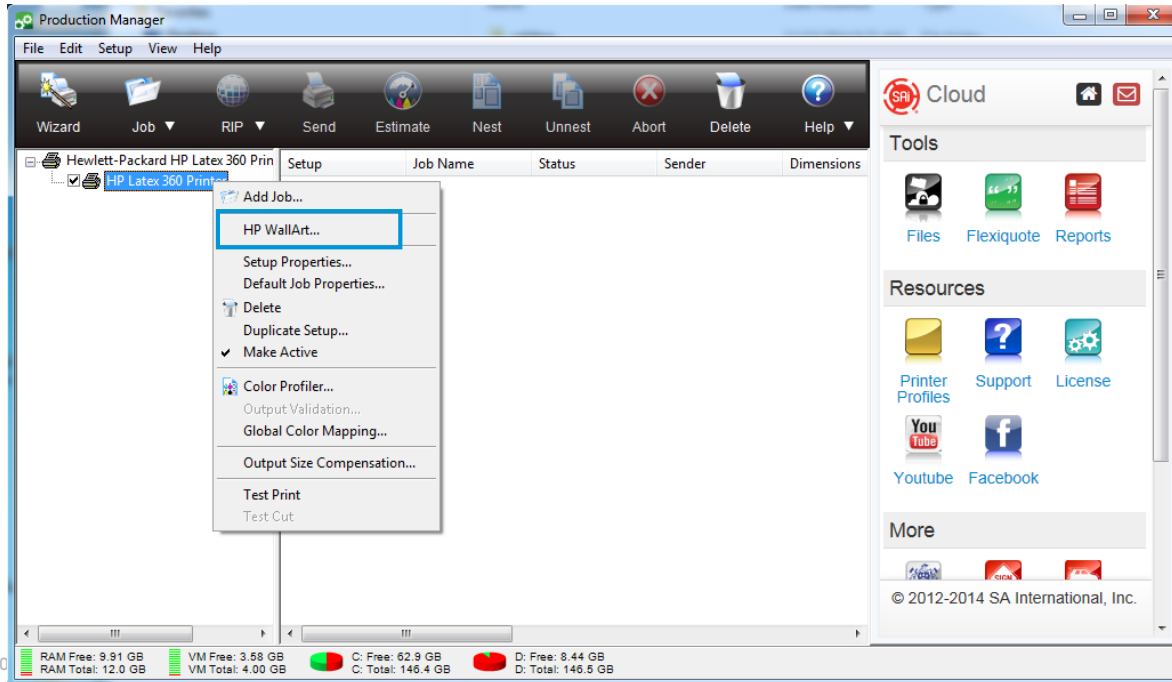
For SAI Flexi print HP Basic and Premium edition

Set up HP Wallart in SAi RIP



Only for SAiFlexi Print HP Basic and Premium Edition and HP FlexiSIGN PRO

- 1 Open RIP application, select HP Latex printer and click & select HP WallArt option:

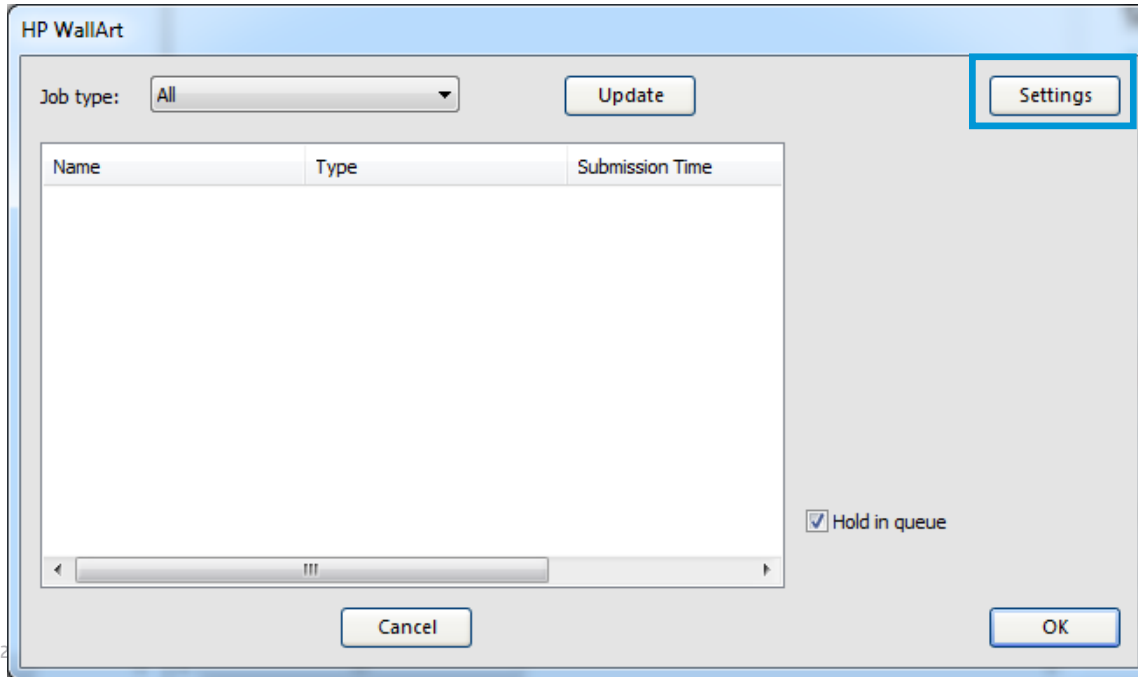


Set up HP Wallart in SAi RIP



Only for SAiFlexi Print HP Basic and Premium Edition and HP FlexiSIGN PRO

2 The HP WallArt will be displayed. Click on Settings button to configure HP WallArt



Set up HP Wallart in SAi RIP



Only for SAiFlexi Print HP Basic and Premium Edition and HP FlexiSIGN PRO

3 Type in HP WallArt settings & click on OK tab

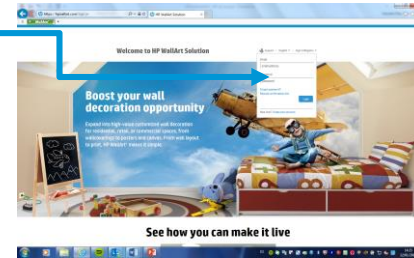
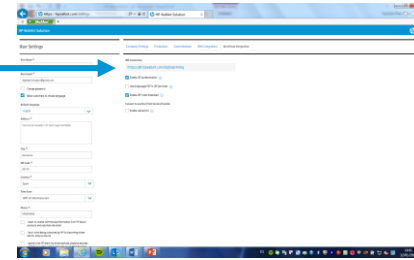
HP WallArt setting

HP WallArt URL:

HP WallArt User:

HP WallArt Password:

Cancel OK

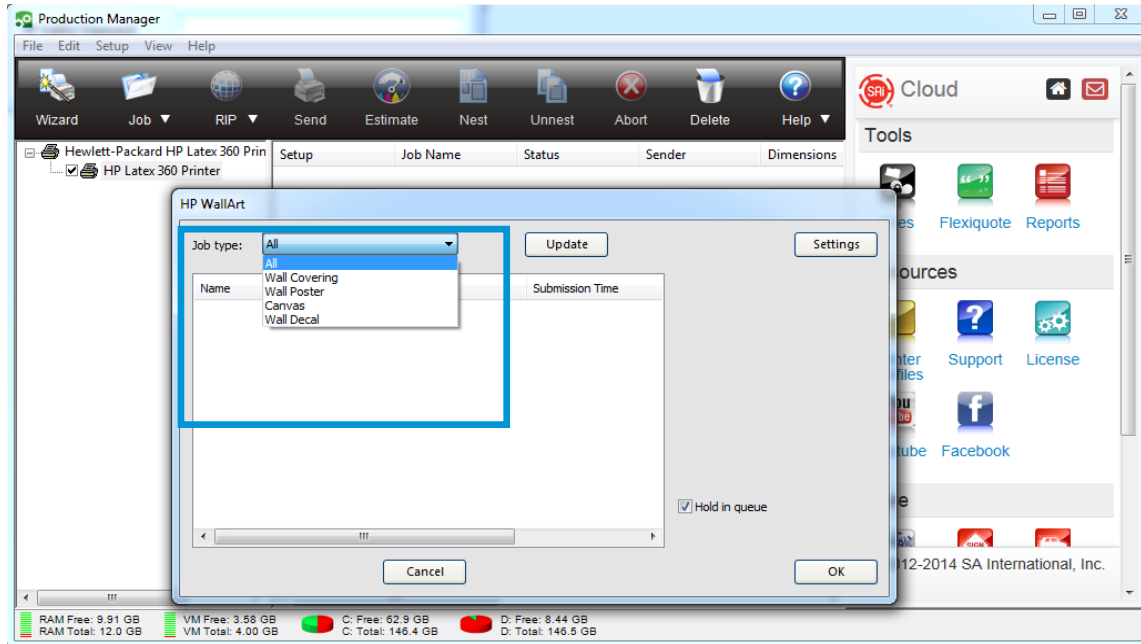


Set up HP Wallart in SAI RIP



Only for SAI Flexi Print HP Basic and Premium Edition and HP FlexiSIGN PRO

4 HP WallArt window will display the available jobs in HP WallArt

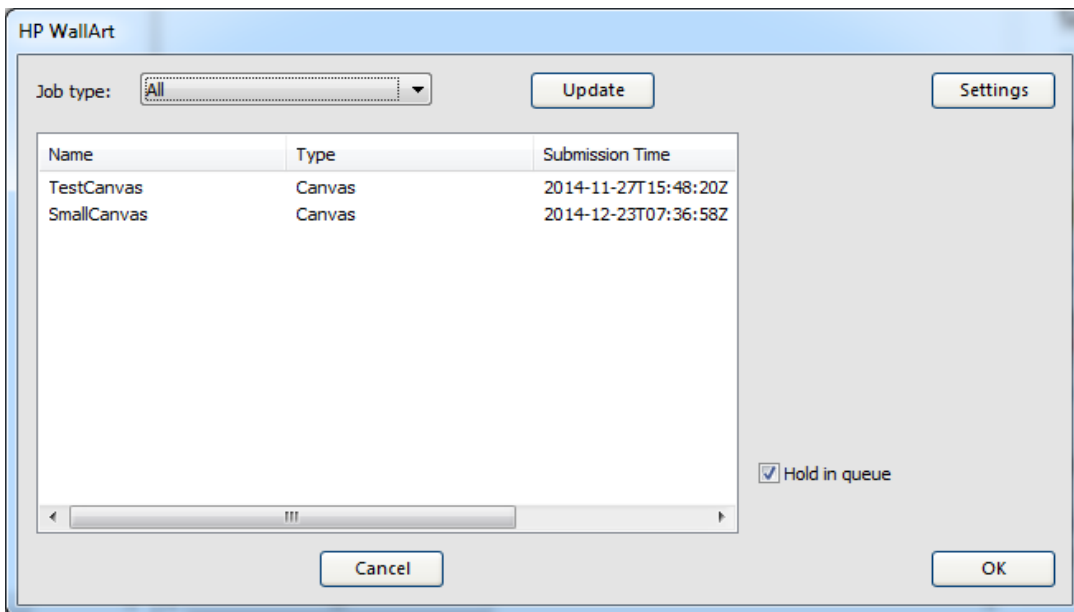


Set up HP Wallart in SAi RIP



Only for SAiFlexi Print HP Basic and Premium Edition and HP FlexiSIGN PRO

4 It can be filtered by type

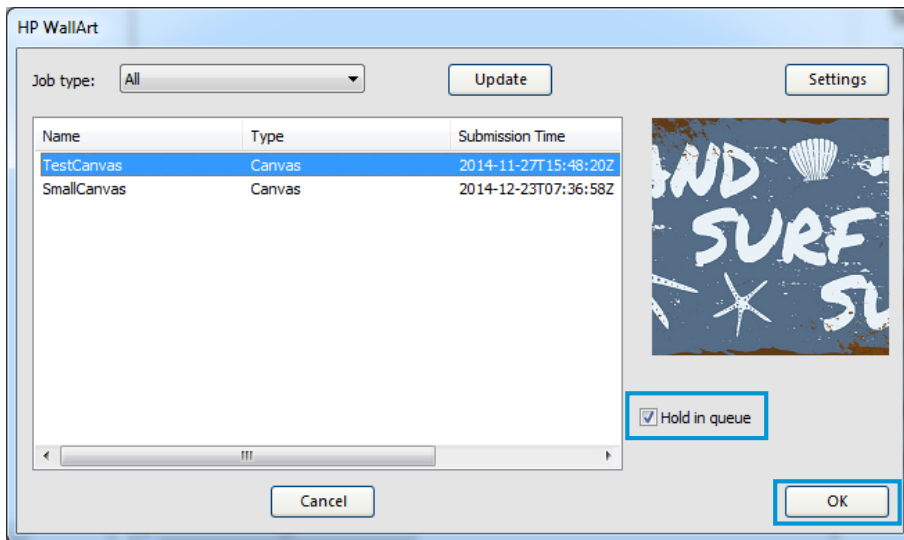


Set up HP Wallart in SAi RIP



Only for SAiFlexi Print HP Basic and Premium Edition and HP FlexiSIGN PRO

- 5 Select the jobs to be downloaded to the RIP printer queue and click OK
In case you want to hold the jobs on the queue, select “Hold in queue option”.

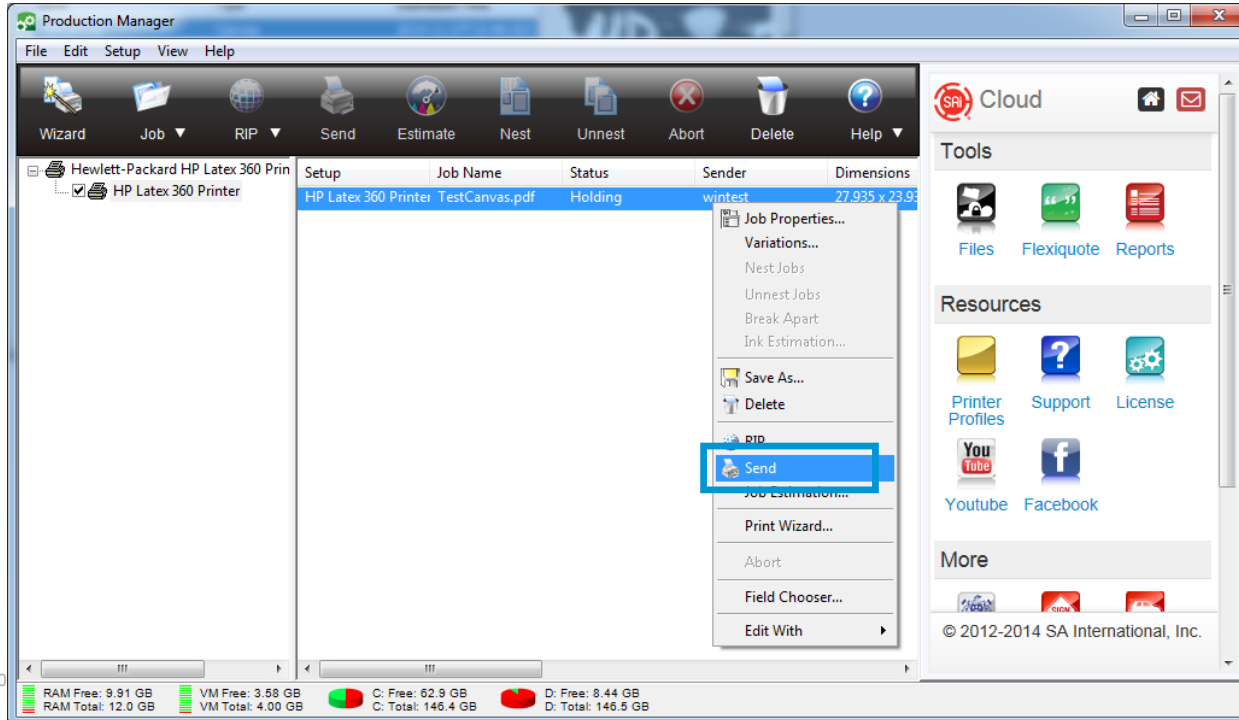


Set up HP Wallart in SAi RIP



Only for SAiFlexi Print HP Basic and Premium Edition and HP FlexiSIGN PRO

6 Once in the RIP queue, it is ready to be processed and printed from the RIP.



Thank you

